

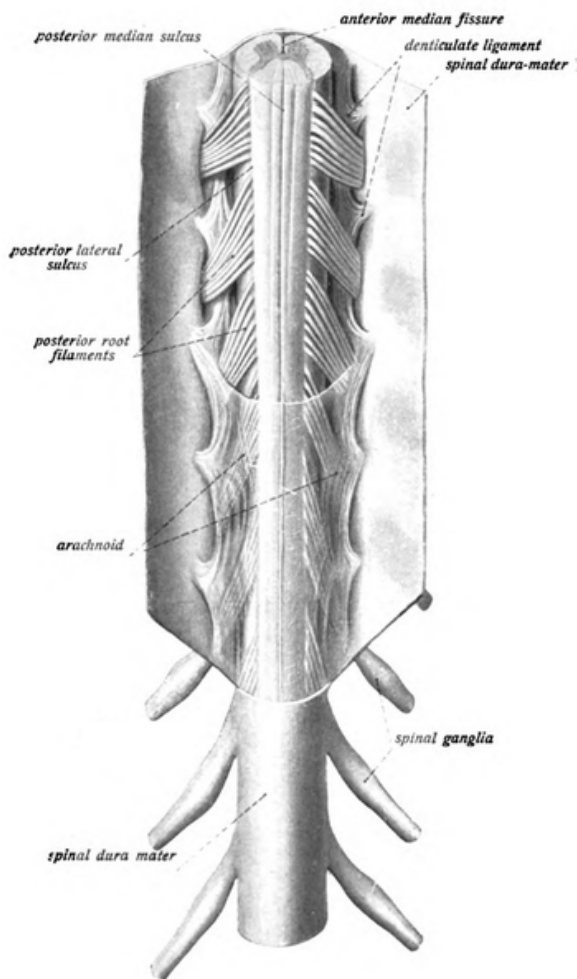
SOP from the University of Maryland Brain and Tissue Bank A Brain and Tissue Repository of the NIH NeuroBioBank



Submitted July 12, 2017

SPINAL CORD RECOVERY

First recover the brain and process it by the Minimum Brain Dissection Protocol.



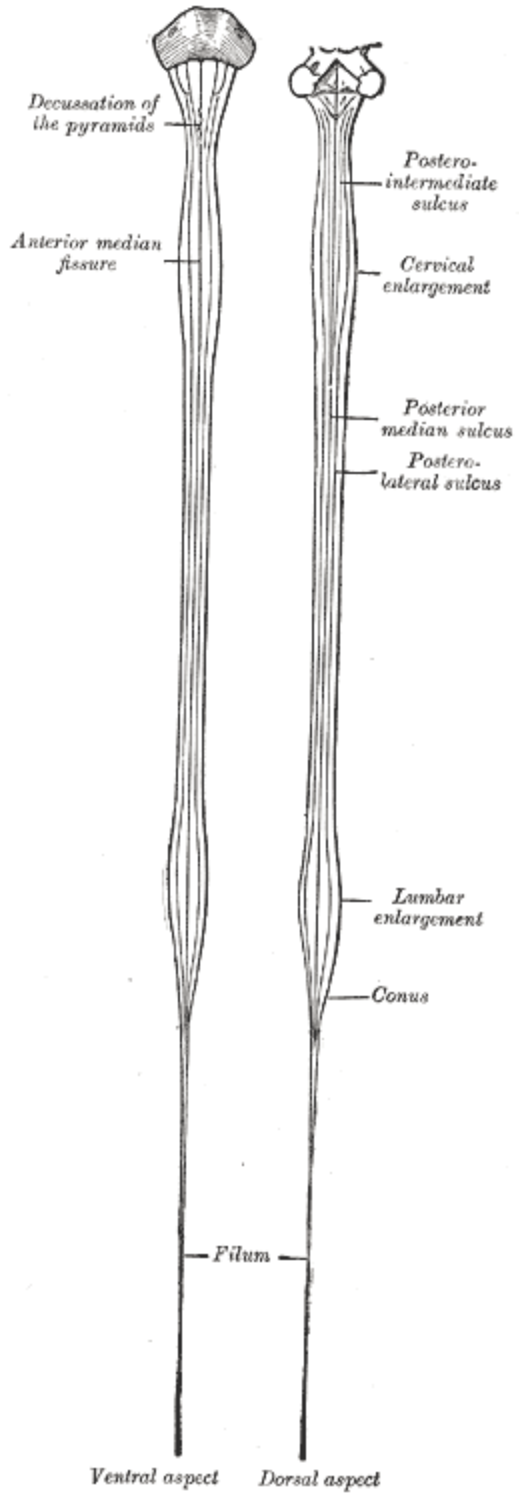
CUT the dura of the spinal cord by inserting scissors at the cervical end of the spinal cord and slightly pulling up on the dura with the scissors while cutting the dura the full length of the spinal cord. Then remove the sections of the dura attached to the spinal cord by cutting the nerve root filaments.

CUT the spinal cord at the Cervical/Thoracic and the Thoracic/Lumbar junctures as indicated on the next page to yield 3 sections.

FIXED: Cut 2-3cm long sections from the superior end of each of the cervical, thoracic and lumbar regions and place in 10% formalin. LABEL SAMPLES with name of regions.

FROZEN: Arrange the three remaining sections IN A STRAIGHT LINE on a flat hard surface with the superior portion aligned (so that the orientation can be marked on the bag, see below). Freeze at -80°C if available.

After the sections are frozen, place in INDIVIDUALLY LABELED plastic bags, marking "S" for the superior end.



____ CUT was made here during recovery

Cervical

____ CUT below the Cervical enlargement

Thoracic

____ CUT above the lumbar enlargement

Lumbar

Sacral